

ACKNOWLEDGMENT OF COUNTRY

Health Infrastructure and Southern NSW Local Health District acknowledge and pays respect to the Traditional Custodians of the lands within its boundaries, the Gundungurra, Ngannawal, Ngambri, Ngarigo, and Yuin peoples.

Barra-gi Consulting and UAP acknowledge Aboriginal and Torres Strait Islander Elders, community members and staff for their ongoing contribution to society and their commitment to improving the health and wellbeing of Aboriginal and Torres Strait Islander people.



OPPORTUNITY FOR ABORIGINAL AND TORRES STRAIT ISLANDER ARTISTS AND COMMUNITY MEMBERS

Expression of Interest (EOI) · Eurobodalla Regional Hospital



Main Entry Art Commission

Expression of Interest (EOI)

Introduction

UAP on behalf of Health Infrastructure and Southern NSW Local Health District is calling for **Expressions of Interest** from Aboriginal and Torres Strait Islander Artists and Community Members to contribute to a major artwork for the new Eurobodalla Regional Hospital, opening in 2027.

This is an opportunity for community to come together and help shape this exciting creative project for your new Hospital.

Three workshops will be held in August 2025, across Moruya, Narooma and Batemans Bay.

There are 2 different ways to get involved:

1. As the **Project Artist (1 artist invited)**; or
2. As a **Community Member**

You are welcome to express your interest to participate as the project artist and as a community member, however you will only be invited for one of these roles.

About Eurobodalla Regional Hospital

The NSW Government has committed \$330 million to build a sustainable, modern and purpose-built facility to support the needs of the entire Eurobodalla Shire from Narooma to Batemans Bay, opening in 2027. The new Eurobodalla Regional Hospital will be larger than both Moruya and Batemans Bay hospitals combined, designed with the capacity to grow as demand for services change.

The Main Entry Art Commission will:

- Contribute to a culturally safe environment for Aboriginal and Torres Strait Islander patients, staff and families.
- Share the principle of *Walawaani* – the spirit of welcome and safe journey to and across place – with staff, visitors, families, and neighbours as they arrive and enter the Hospital.
- Provide an opportunity for professional development within the local creative community.

Expression of Interest closes Thursday 17 July 2025 5pm AEST.

Main Entry Art Commission

Expression of Interest (EOI)

1

To Register as a Project Artist



1 artist will be invited as the **Project Artist**. In this role, the artist will participate in all 3 Co-Design Workshops to listen to community member ideas for important themes to guide the Main Entry Art Commission.

The artist will then be responsible for designing the artwork concept, with support from the UAP Design team.

1 artist will be invited to participate in the project, according to the following criteria:

- You are a visual artist with an active art practice
- You identify as a First Nations community member, which refers to holding belonging, connection, and identification with Country, in this case, the Eurobodalla Shire (determined by Local Government Area boundaries and/or boundaries of 6 local Aboriginal Land Councils). This includes shared characteristics such as nationality, cultural group, Kinship, and values.

2

To Register as a Community Member



Community members will be invited to participate in one Co-Design Workshop.

We are seeking expressions of interest from **First Nations Knowledge Holders, Elders, storytellers, and locally connected community members** who:

- Have a belonging, connection, and identification with Country, in this case, the Eurobodalla Shire. This includes shared characteristics such as nationality, cultural group, Kinship, and values.

Fees

Project Artist

The Project Artist will be paid a **commissioning fee of \$13,000 + GST** for their time and for the artwork they develop. The successful artist must attend all 3 workshops.

The commissioning fee will be paid in stages. The fee for the first stage of work is \$3,000 + GST.

Community Member

Elders and community members will be **paid \$300 for their time and travel costs to attend 1, 3-hour workshop**.

Community members representing an organisation in a paid/employee capacity are not eligible for remuneration.



How to Register your Interest

There are 2 ways to submit:

1. Scan the QR code and complete the online email form
2. Email your responses to Barra-gi Consulting at rae@barra-giconsulting.com.au

Expression of Interest closes Thursday 17 July 2025 5pm AEST.

Main Entry Art Commission

Expression of Interest (EOI)

How the Artist will be selected:

The project artist will be selected through the following process:

- Barra-gi Consulting and UAP will collate all EOI applications and share with the Eurobodalla Regional Hospital Development project team.
- EOI applications will be reviewed against the selection criteria by a curatorium including representatives of Health Infrastructure, Southern NSW Local Health District and Barra-gi Consulting.
- Artists who have scored highly against the selection criteria will be shared with Aboriginal Health Staff across the Eurobodalla region. Staff will have an opportunity to vote for their preferred artist.
- The artist with the most votes will be recommended to the ERH Project Delivery Team and ERH Planning and Delivery Committee for endorsement.
- The nominated artist will be invited to be the project artist for the Main Entry Art Commission

Support for Applicants

If you require support or have any questions about the application process, please contact

Raelene Talbot from Barra-gi Consulting.

Phone: 0480 301 075

Email: rae@barra-giconsulting.com.au

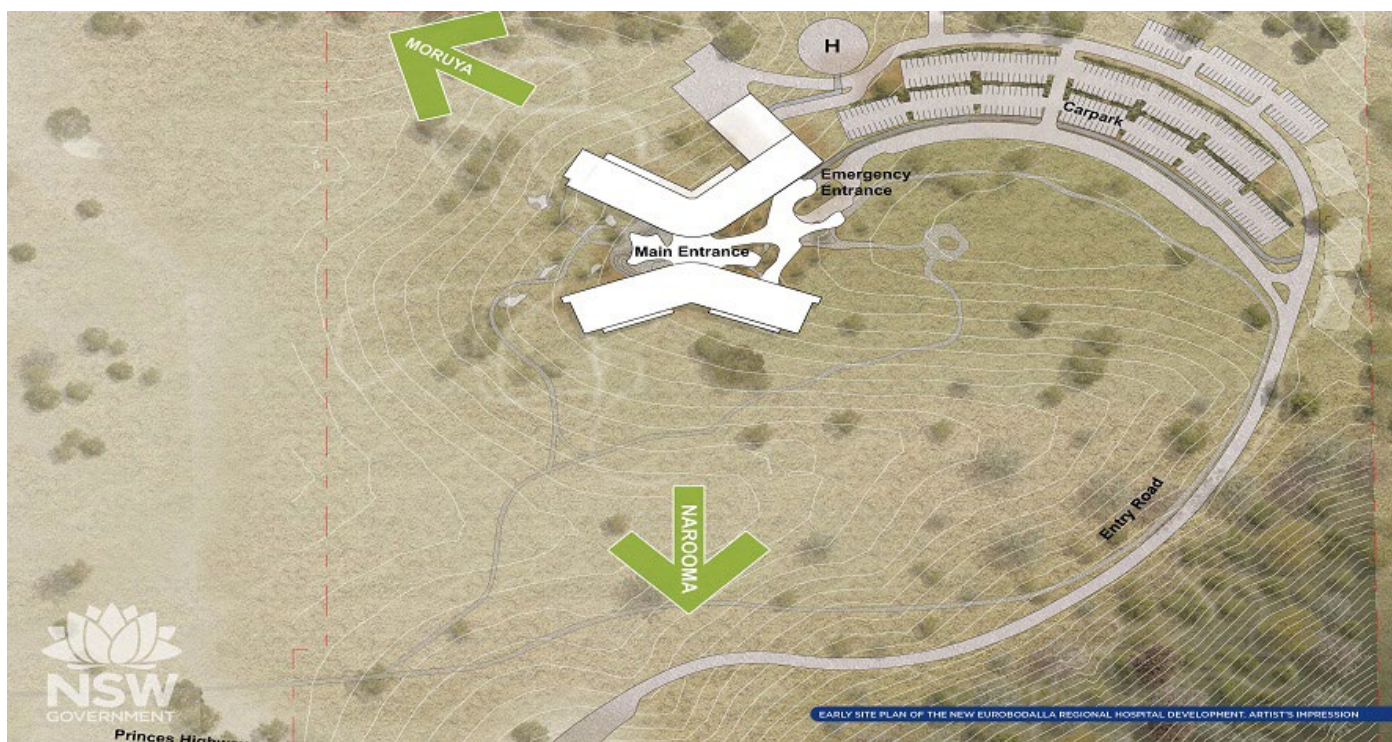
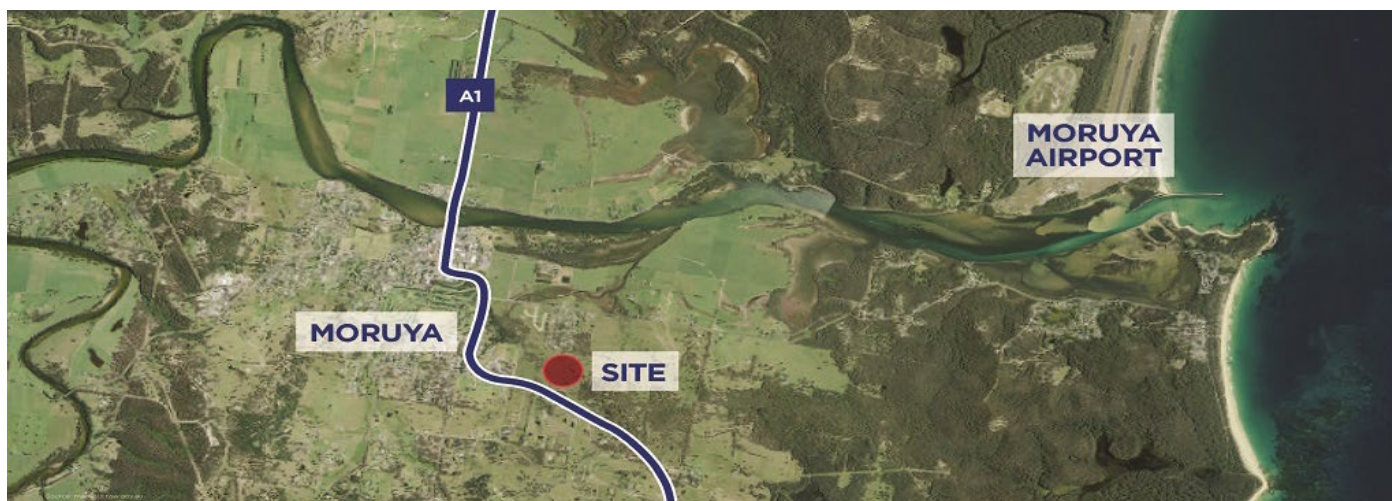
Indigenous Cultural Intellectual Property

Throughout this process, Indigenous Cultural and Intellectual Property (ICIP) will be respected and retained. ICIP refers to the rights that Indigenous people have, and want to have, to protect their traditional arts and culture. Sometimes the words "Cultural Heritage" are used to refer to the same thing.

Main Entry Art Commission

Expression of Interest (EOI)

Site Location



MAP VIEWS

Eurobodalla Regional Hospital