

transport.nsw.gov.au

Transport for NSW acknowledges the Traditional Custodians of the land on which we work and pays respect to Elders past and present.



Tarago Rail Corridor

Transport for NSW (Transport) is seeking feedback on the Review of Environmental Factors (REF) for the remediation of the Tarago Rail Corridor.

Background

Transport has identified lead contamination along the Tarago Rail Corridor. The lead contamination is related to a historical mining load-out facility.

The preferred option for the remediation of the Rail Corridor is to dispose of the contaminated material at a licensed waste facility near Sydney.

What is the scope of the REF?

The REF outlines the features of the remediation project and assesses the potential environmental and community impacts expected during the work.

It also includes how we plan to reduce these impacts on the community and environment.

Your feedback will help us understand what is important to the community and identify additional ways to reduce potential impacts.

What are the potential impacts?

The key potential impacts or risks identified in the REF include:

- dust management during demolition, excavation and heavy vehicle loading
- soil and water management
- heavy vehicle movements and materials tracking.

How will Transport reduce the potential impacts?

The REF outlines the mitigation measures to reduce potential impacts on the community and environment. These include:

- a dust management plan – which will be prepared by the remediation contractor before remediation work starts and implemented during remediation
- air quality monitoring – which will be conducted during the remediation works
- a soil and water management plan – which will be implemented during remediation to protect local creeks
- a traffic management plan – which will be implemented during remediation.

What are the key findings of the REF?

The key findings of the REF are:

- removing contaminated materials is expected to result in positive social impacts and protect the environment
- identified environmental impacts can be adequately mitigated by implementing environmental safeguards and management measures

- an environmental impact statement, species impact statement and/or biodiversity development assessment report are not required for the proposal
- the proposal is not likely to have a significant impact on the environment due to the limited scope of works and the expected level of remediation required
- the proposal is unlikely to impact on a matter of national environmental significance, and therefore a referral under the Commonwealth Environmental Protection and Biodiversity Act is not required.

When will the work take place?

Remediation work is planned for 2027. Transport will also remediate the land within the Tarago Former Station Master's Cottage (FSMC) site.

We'd like to hear from you

The REF is on public display from **6 August to 3 September** 2025 and community feedback is invited.

To view the REF and provide feedback, please visit: <https://bit.ly/tarago-rail-corridor-ref-HYS>.

How to provide feedback:

Website: <https://bit.ly/tarago-rail-corridor-ref-HYS> and make a submission.

Email: landassessment@transport.nsw.gov.au

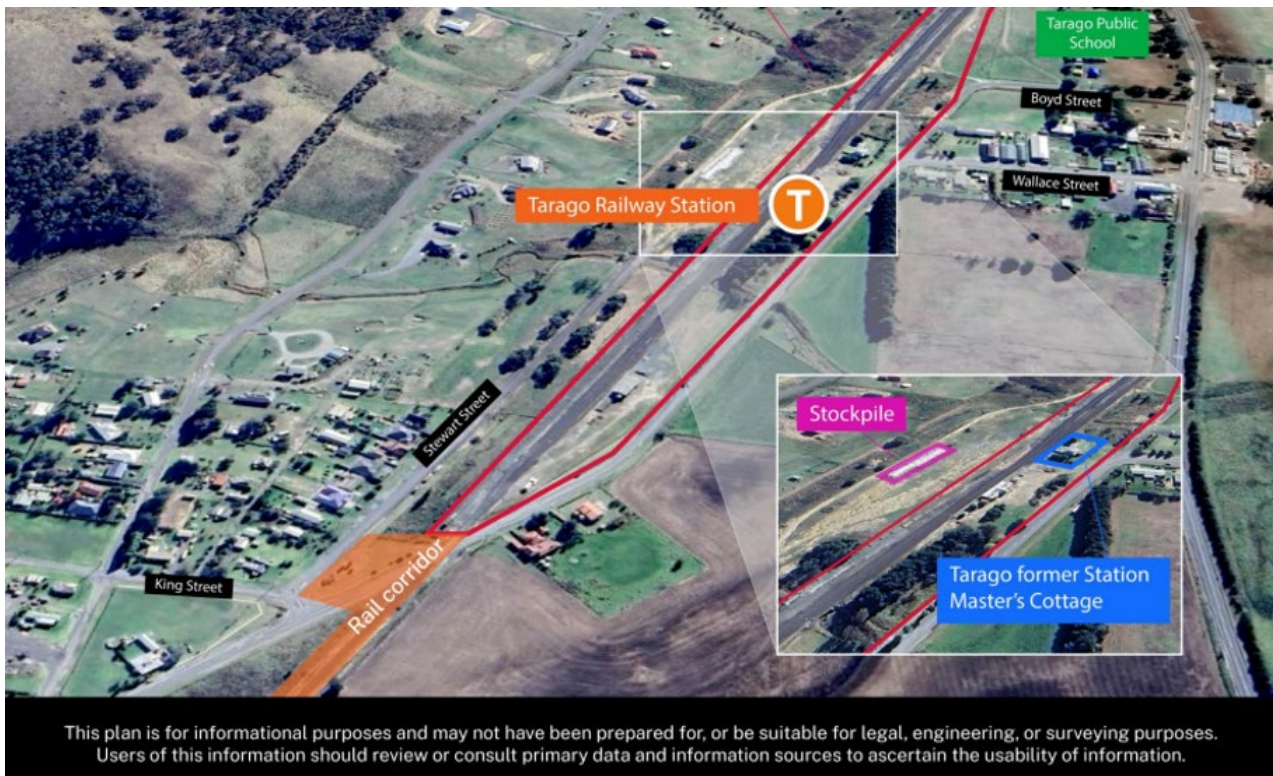
Phone: Call 1800 491 566 to request a phone survey.

What happens next?

When this consultation closes, Transport will:

- assess all feedback received
- develop and publish a report summarising the feedback received and Transport's response
- seek internal approval to proceed with the project
- proceed with detailed design
- remediate the land within the Tarago Rail Corridor and the FSMC site.

Location of Site



Frequently asked questions

What other work is planned at Tarago Rail Corridor?

Remediation works are also planned to occur at the Tarago FSMC site and a stockpile of waste material located on privately owned land. Transport developed and displayed an REF for the FSMC in July 2025. We are currently reviewing the feedback received and will publish a report summarising the feedback received and Transport's response.

What is the status of the Rail Corridor remediation project?

The project is in the Remediation Planning phase. A Remediation Options Assessment was prepared for the Tarago Rail Corridor. Transport considered all social, economic and environmental impacts of the options and community feedback.

The preferred option is off-site disposal at a licensed waste facility near Sydney.

We are committed to ensuring the health and wellbeing of the community and our workers and will continue to work with the EPA to manage the site.

Transport is preparing a Remediation Action Plan and planning approvals to progress the project. The detailed design is in progress and expected to be completed in 2026.

For more information on our planning work at Tarago visit [Tarago rail yards lead contamination | Transport for NSW](#).

How long is the work expected to take?

The remediation work is expected to take about 12 weeks, weather permitting. Controls will be in place to complete the work safely and monitor air quality during the work.

What measures will be in place to protect local creeks?

A soil and water management plan will be implemented during remediation work to prevent run-off entering local creeks. This will be monitored as part of the Construction Environmental Management Plan (CEMP) to protect the environment and community.

What time will trucks remove waste material from the site?

Trucks will transport waste material from the site between 9am and 3pm Monday to Friday to avoid school pick up and drop off times and bus operations.

What happens if there are strong winds?

The remediation work would stop in the event of strong winds to ensure dust does not travel off-site. Monitoring will take place to ensure there are no impacts on neighbours and the local community.

Measures to reduce dust may include the use of a water cart or other similar dust reducing equipment.

How much contaminated waste will need to be removed from the Tarago Rail Corridor?

A total of 4650 cubic metres (8370 tonnes) of contaminated waste material will need to be transported from Tarago.

It will take approximately 210 truck movements to remove the waste from Tarago and transport it to the licensed waste facility at St Marys, near Sydney.

What's happening with the air and surface water monitoring at Tarago Rail Corridor?

Transport has conducted air and surface water monitoring for over five years. The results consistently confirm there is no evidence of lead concentrations exceeding the human health and ecological investigation criteria migrating from the Site.

A review of the air and surface water monitoring results was conducted by an Auditor, which also confirmed these findings. The Air Quality and Surface Water Monitoring – Interim Audit Advice (IAA) report is available to view on the [project website](#).

Transport has determined that the air and surface water quality monitoring will be changed from a time-based program to an activity-based program. This decision has been reviewed and supported by the Site Auditor. Transport will amend the Lead Management Action Plan to reflect this change and add it to the project website. This means that monitoring would only be conducted during activities such as remediation or earthworks.

The last planned [monitoring report](#) under the time-based program was completed in August 2024.

Monthly routine inspections of the Stockpile will be ongoing until the site is remediated and are available to view on the [project website](#)

What were the results of monitoring completed in August 2024?

A final systematic air quality monitoring was carried out in August 2024. No lead was detected in deposited dust above the limit of reporting. Lead was detected in all 24-hour average total suspended particulate samples, but in all cases the concentrations were well below the relevant annual average criteria.

Boundary air quality monitoring will be carried out during remediation of the Stockpile, FSMC and Rail Corridor and for three months post remediation. Particulate matter trigger levels will be set up to manage construction impacts.

Why has Transport developed a Statement of Heritage Impact?

The Woodlawn Siding Rail Corridor forms part of the Tarago Rail Precinct, which is listed on the State Heritage Register. Transport has prepared a Statement of Heritage Impact (SOHI) for the remediation works in the Rail Corridor.

The SOHI determined that listed items are separated from the work area by at least the

width of one set of railway lines. As a result, there will be no direct impact to the identified heritage values. The works will not alter the visual amenity or aesthetic appeal of the listed heritage items.

A Section 57 Heritage Exemption has been prepared for the proposed remediation works.

Conditions will apply to the proposed works, including the implementation of an unexpected heritage finds procedure.

The SOHI is available on our [website](#).

What's happening with the Stockpile?

The Stockpile is located on Veolia land, adjacent to the Tarago Rail Corridor. The volume of waste to be removed from the Stockpile is far less than the volume of waste to be removed from the Rail Corridor (750 cubic metres compared to 4650 cubic metres).

The remediation strategy for the Stockpile is off-site disposal at an appropriately licensed facility in Sydney. This is the most efficient option. Control measures will be in place during the remediation of the Stockpile.

Transport has completed a Remediation Action Plan (RAP) for the remediation of the Stockpile.

Will there be an REF for the Stockpile?

An REF has been developed for the removal of the Stockpile. The key risks identified are dust management during excavation and heavy vehicle loading.

The REF outlines the mitigation measures to minimise impacts on the community and environment. This includes developing a dust management plan and air quality monitoring during the work.

The REF will be made available for information on the project website.

When will the Stockpile be removed?

We are currently in the procurement phase to engage a contractor to implement the RAP. The works are planned to be completed in mid-2026, subject to weather and planning approvals.

We will keep the community updated as timelines are confirmed.

Contact us



Project Infoline **1800 491 566**



landassessment@transport.nsw.gov.au



<https://www.transport.nsw.gov.au/projects/current-projects/tarago-rail-yards-lead-contamination>



18 Lee Street, Chippendale NSW 2008
PO Box K659, Haymarket NSW 1240



Interpreter service

For languages other than English call 131 450
Arabic • Greek • Hindi • Mandarin • Vietnamese

لطلب خدمة الترجمة الشفهية للغات غير الإنجليزية اتصل
بالرقم **131 450**

Για υπηρεσίες διερμηνείας σε άλλες γλώσσες εκτός από
τα Αγγλικά καλέστε το **131 450**

अंग्रेज़ी के अतिरिक्त अन्य भाषाओं के लिए दुभाषिया सेवा
131 450 पर कॉल करें

获取英语以外的其他语言口译协助服务可以致电**131 450**

Để có dịch vụ thông ngôn cho các ngôn ngữ khác tiếng
Anh, gọi số **131 450**