

Newcastle Link Road and Minmi Road intersection upgrade

Have your say on the preferred design

September 2025



We are inviting feedback on the preferred design for the proposed upgrade of the Newcastle Link Road and Minmi Road intersection at Cameron Park.



Newcastle Link Road and Minmi Road intersection, Cameron Park

The NSW Government is investing in planning for the upgrade of the Newcastle Link Road and Minmi Road intersection at Cameron Park to help ease congestion, support future growth along the corridor and improve safety for all road users.

Newcastle Link Road is a major arterial road that links residential, commercial and recreational areas of Newcastle. Up to 55,000 vehicles use Newcastle Link Road each weekday. The traffic approaching the Newcastle Link Road-Minmi Road roundabout in peak periods is high, creating significant queues and delays for motorists.

The Link Road connects Newcastle and its suburbs to the M1 Pacific Motorway and the M15 Hunter Expressway, linking Newcastle to the Central Coast, Sydney, the Hunter Valley and New England regions. Future development of urban release areas near Cameron Park and Minmi would increase congestion and add additional pressure to the network.

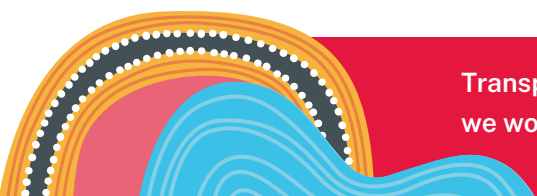
An upgrade of the intersection would ease existing congestion, allow for the expected increased traffic volumes, support land releases and facilitate new homes in the area.

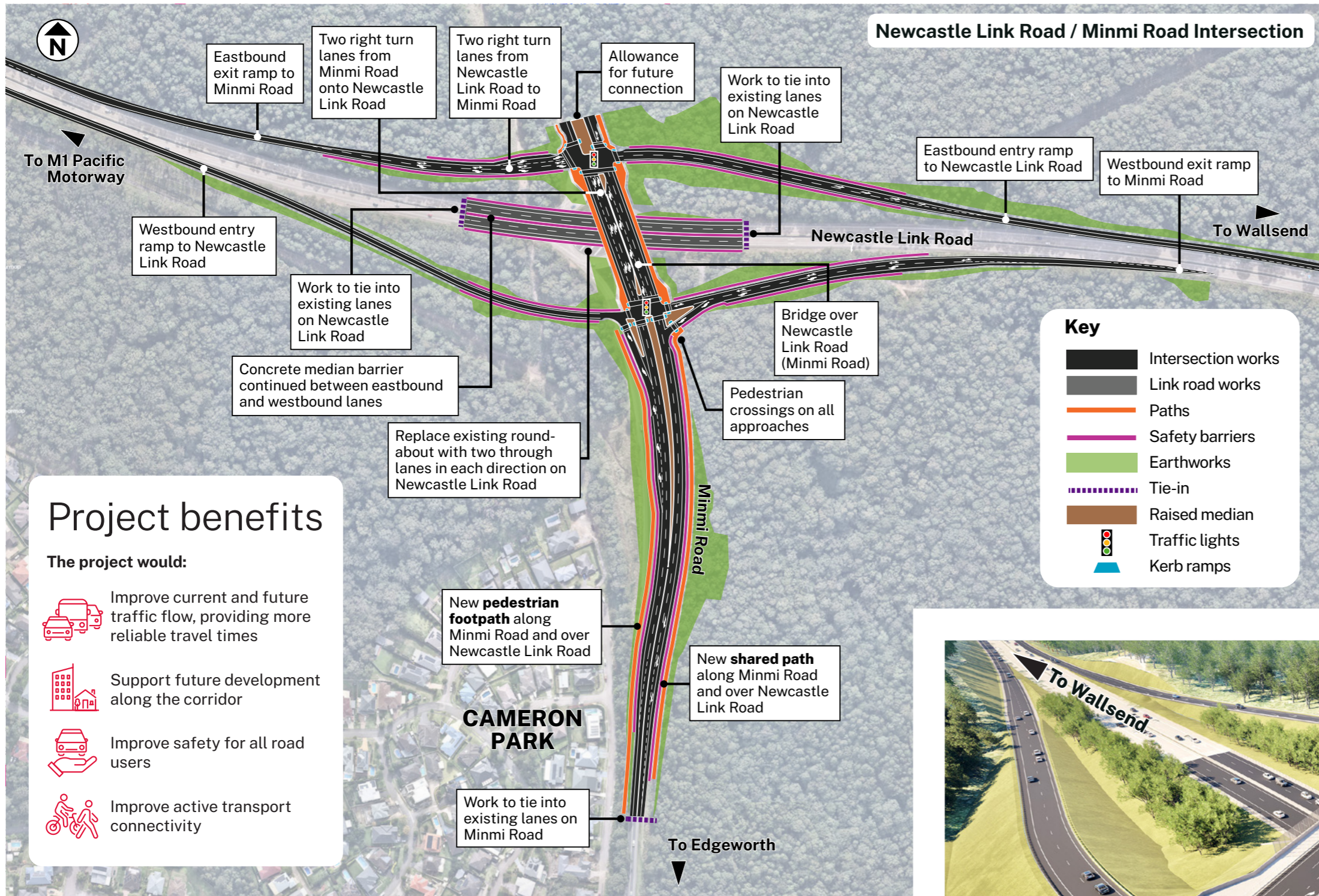
Transport for NSW (Transport) has carried out site investigations and considered a range of upgrade options for the intersection.

A preferred design has been identified, which includes replacing the existing roundabout with a grade separated interchange. The preferred option includes a new bridge taking Minmi Road over Newcastle Link Road with ramps to and from Newcastle Link Road in all directions. Active transport connections would also be included as part of the upgrade.

We invite you to have your say on the preferred design for the proposed upgrade. Your feedback will help us understand what is important to you and help further refine the concept design.





**Feedback closes at 11:59pm
Friday 17 October**





Project benefits

The project would:

-  Improve current and future traffic flow, providing more reliable travel times
-  Support future development along the corridor
-  Improve safety for all road users
-  Improve active transport connectivity

Key features of the proposed upgrade

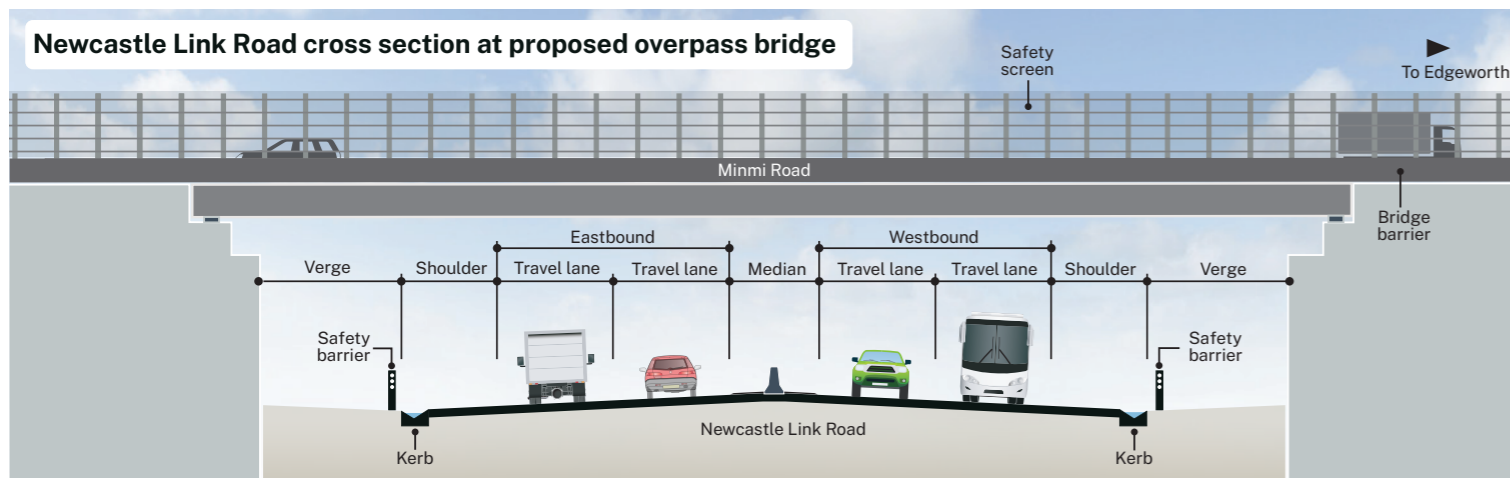
The preferred design proposes to replace the existing roundabout with a grade separated interchange.

Proposed changes to Newcastle Link Road:

- Replace the existing roundabout with two through lanes in each direction, allowing the free flow of traffic along Newcastle Link Road
- Provide entry and exit ramps for motorists travelling between Minmi Road and Newcastle Link Road
- Connect the concrete median barrier between eastbound and westbound lanes.

Proposed changes to Minmi Road:

- Provide a bridge over Newcastle Link Road
- Install two sets of traffic lights to control movements to and from Newcastle Link Road
- Provide raised medians along the bridge and on approach to the traffic lights
- Provide a shared path along Minmi Road and across the bridge for pedestrians and cyclists.



An artist's impression aerial view of the overpass bridge and upgrades

Next steps

After the consultation period closes, we will publish a report that includes responses to key items raised by the community. We will consider all feedback received as we further refine the concept design and prepare the environmental assessment for the upgrade. This will include more detailed information about the design features, potential benefits and impacts, and will be displayed for community feedback.

Transport will continue to liaise with the community and key stakeholders, including City of Newcastle and Lake Macquarie City councils, as the project progresses. Timing for construction is not confirmed and would be dependent on further funding availability and planning approvals.

Project progress



- Scoping and investigation
- Display preferred design**
- Publish consultation report
- Prepare concept design and environmental assessment
- Display concept design and environmental assessment
- Submissions report
- Project approval
- Detailed design*
- Construction*

* subject to planning approvals and funding allocation

Have your say



We are inviting the community and stakeholders to comment on the proposed Newcastle Link Road and Minmi Road intersection upgrade.

Survey: www.haveyoursay.nsw.gov.au/nlrmr (preferred)

Email: NewcastleLinkRd@transport.nsw.gov.au

Mail: Newcastle Link Road
Minmi Road upgrade Project team
Transport for NSW, Locked Bag 2030
Newcastle, NSW, 2300

Feedback closes at 11:59pm Friday 17 October.



An artist's impression view along Newcastle Link Road

Contact us:



Project Infoline: 1800 240 088 (business hours)



NewcastleLinkRd@transport.nsw.gov.au



www.haveyoursay.nsw.gov.au/nlrmr



**Newcastle Link Road-Minmi Road
upgrade Project team
Transport for NSW, Locked Bag 2030
Newcastle, NSW, 2300**



Visit the project webpage
at www.transport.nsw.gov.au/nlrminmi



Interpreter service

For languages other than English please call 131 450

www.transport.nsw.gov.au/privacy-statement#Your_Privacy